

# SYMBOL DS9808

## Quick Start Guide

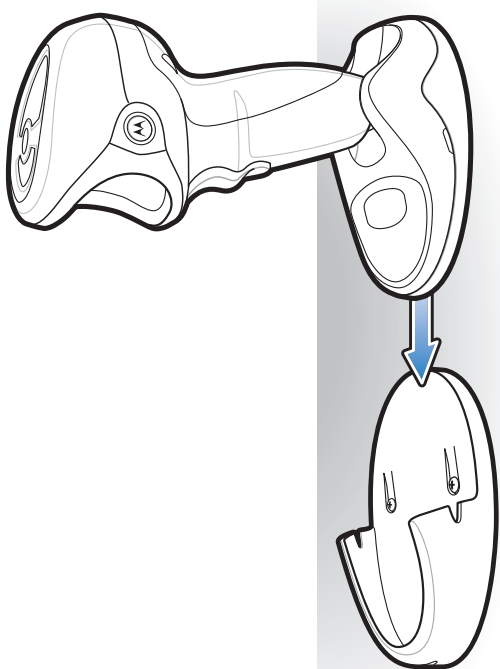


<http://www.motorola.com/ds9808>

See Product Reference Guide for detailed information

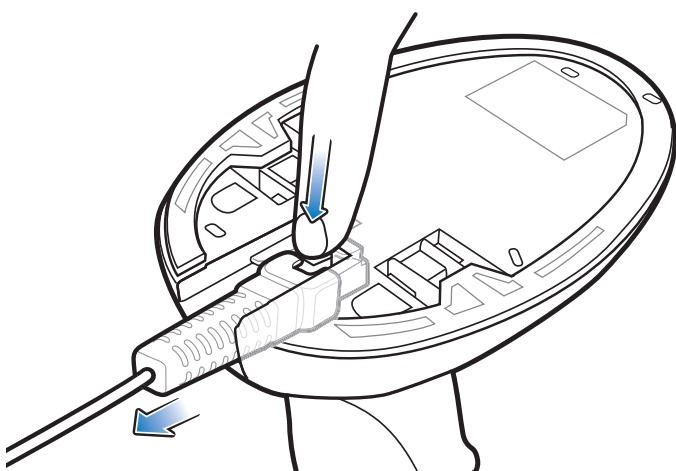
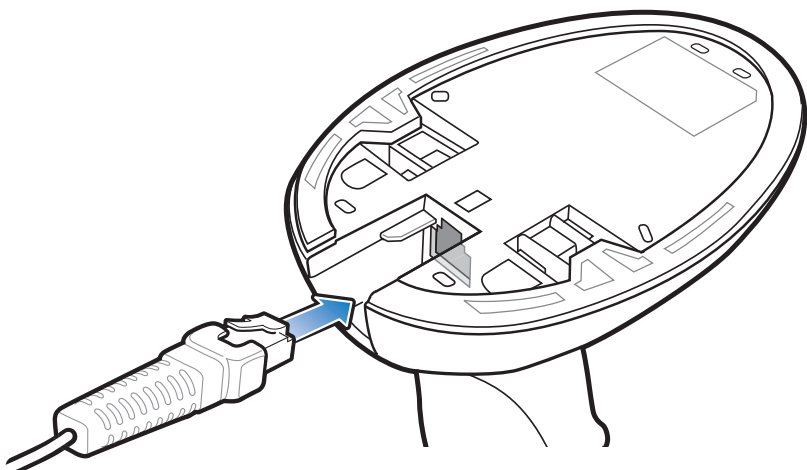
### ACCESSORIES

#### Wall Mount



- 1 LED Indicators
- 2 Scan Window
- 3 Scan Trigger

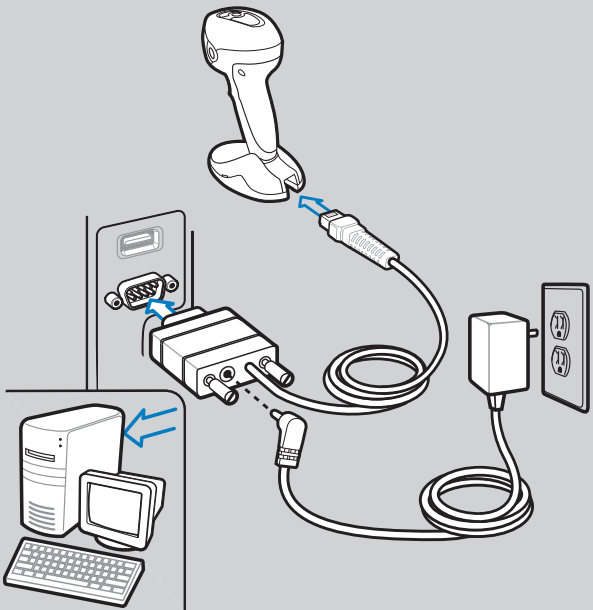
### CORD ATTACHMENT/REMOVAL



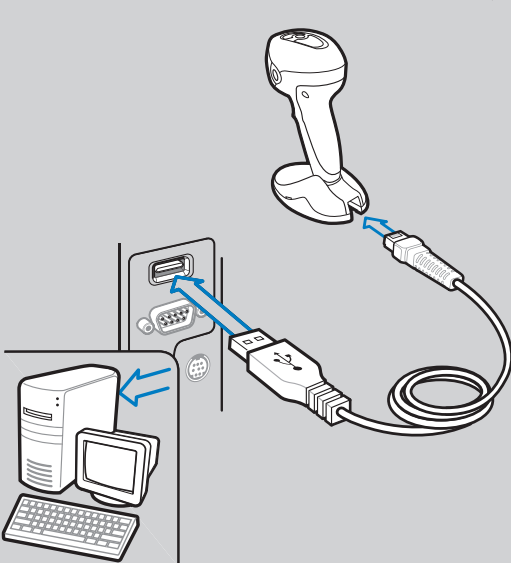
### HOST INTERFACES

NOTE: Cables may vary depending on configuration

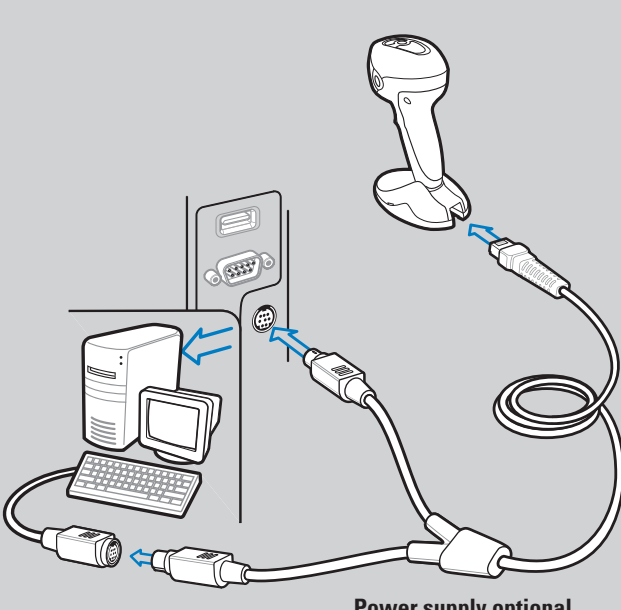
#### RS-232



#### USB

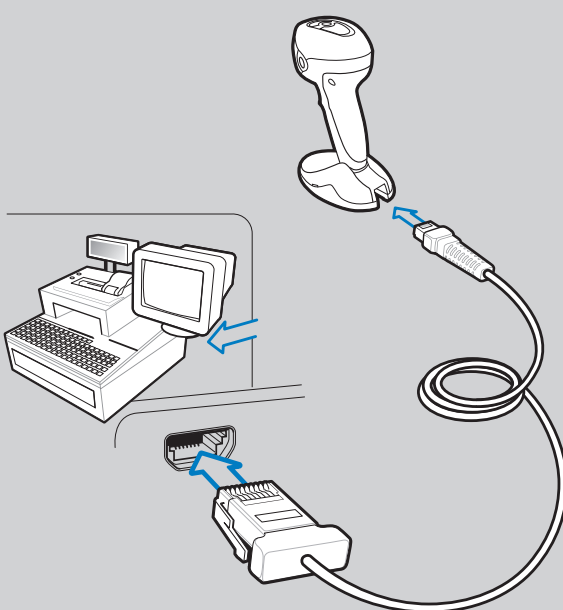


#### Keyboard Wedge



Power supply optional

#### IBM 46XX



### TROUBLESHOOTING

#### Scanner not working

##### No power to scanner

Check system power; ensure power supply, if required, is connected

##### Incorrect interface cable used

Ensure that correct interface cable is used

##### Interface/power cables are loose

Ensure all cable connections are secure

#### Scanner not decoding bar code

##### Scanner not programmed for bar code type

Ensure scanner is programmed to read type of bar code being scanned

##### Bar code unreadable

Ensure bar code is not defaced; try scanning test bar code of same bar code type

##### Distance between scanner and bar code incorrect

Move scanner closer to or further from bar code

#### Scanner decoding bar code, but data not transmitting to host

##### Scanner not programmed for correct host interface

Scan appropriate host parameter bar codes

##### Interface cable is loose

Ensure all cable connections are secure

#### Scanned data incorrectly displayed on host

##### Scanner not programmed for correct host interface

Scan appropriate host parameter bar codes

### SYMBOL DS9808 PROGRAMMING BAR CODES

#### Set Defaults



SET DEFAULTS

#### Enter Key (Carriage Return/Line Feed)



<DATA><SUFFIX 1>

#### IBM 46XX Host Types



PORT 5B



PORT 9B

#### USB Host Types



HID KEYBOARD EMULATION



SNAPI WITH IMAGING

#### Keyboard Wedge Host Types



IBM PC/AT and IBM PC COMPATIBLE



PORT 17



IBM HAND-HELD USB



SNAPI WITHOUT IMAGING

#### Scan **ONE** of the following country types



NORTH AMERICAN



ITALIAN

#### RS-232 Host Types



STANDARD RS-232



NIXDORF RS-232 MODE B



ICL RS-232



FUJITSU RS-232



FRENCH



SWEDISH



FRENCH CANADIAN



UK ENGLISH



GERMAN



JAPANESE



NIXDORF RS-232 MODE A



OPOS/JPOS



SPANISH

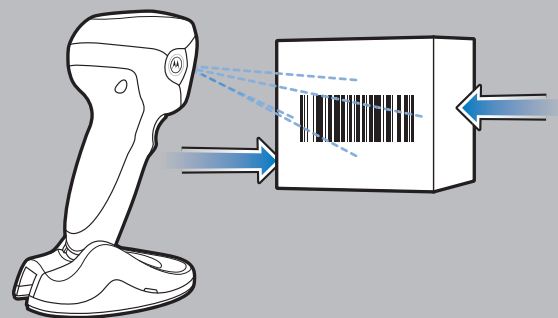


# SYMBOL DS9808

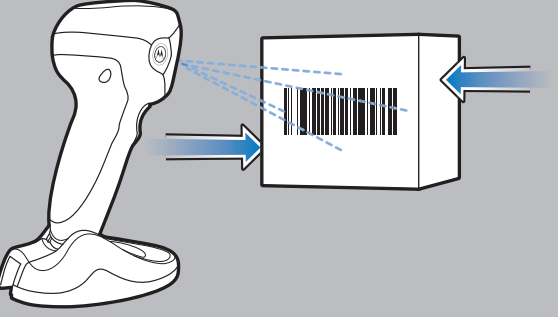
## OPTIMUM SCANNING

### Hands-Free Scanning

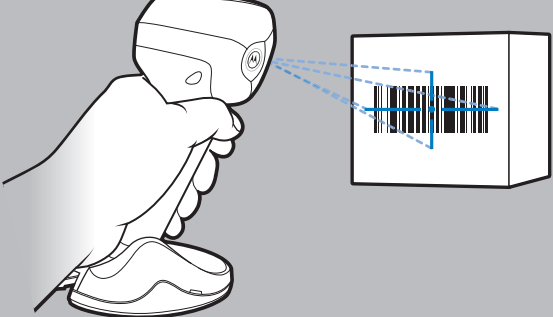
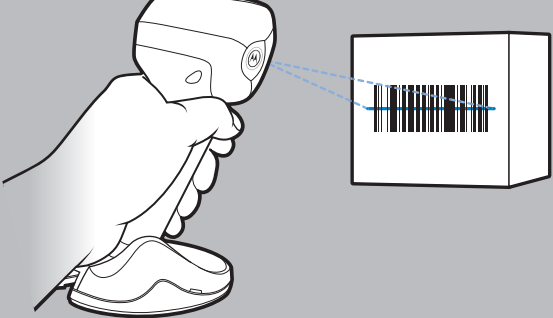
DS9808-LR



DS9808-SR



### Hand-Held Scanning



DS9808-LR



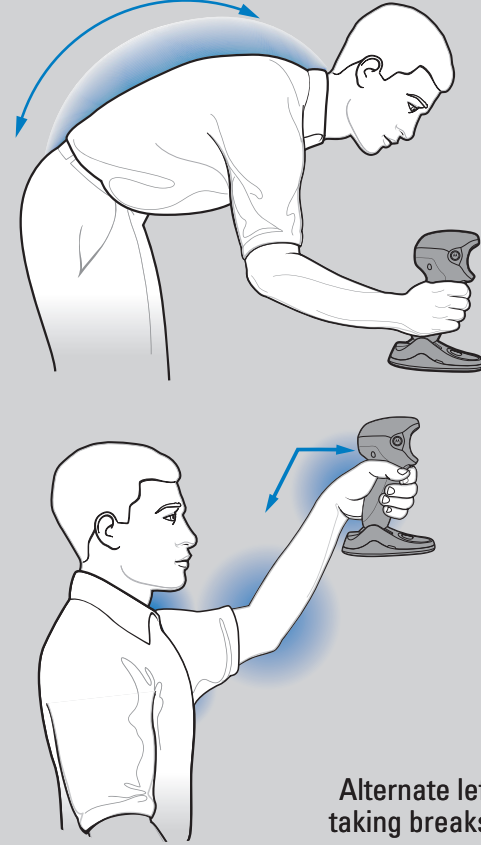
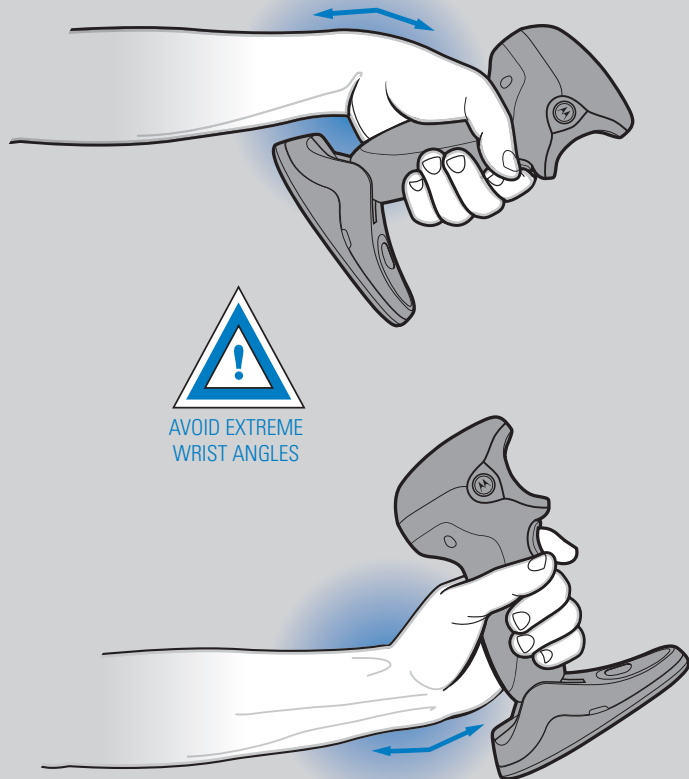
DS9808-SR



## OPTIMUM ARM POSITION

## AVOID EXTREME WRIST ANGLES

## AVOID BENDING AND REACHING



Alternate left and right hands taking breaks and task rotation recommended

## BEEPER INDICATIONS

## LED INDICATIONS

### Standard Use

Low/medium/high beep	Short medium beep	4 long low beeps
Power up	Bar code decoded	Transmission error detected; data is ignored

### Parameter Menu Scanning

High/low/high/low beep	High/low beep	Low/high beep
Successful parameter setting	Correct programming sequence performed	Incorrect programming sequence or "Cancel" bar code scanned

### Hand-Held Scanning

Off	Green	Red
Scanner is on and ready to scan, or no power to scanner	Bar code is successfully decoded	Transmission error

### Hands-Free (Presentation) Scanning

Off	Green	Off Momentarily	Red
No power to scanner	Scanner is ready to scan	Bar code is successfully decoded	Transmission Error

Local Contact: \_\_\_\_\_

## 123SCAN<sup>2</sup>

123Scan<sup>2</sup> is an easy-to-use, PC-based software tool that enables rapid and easy customized setup via a bar code or USB cable. For more information, visit: <http://www.motorola.com/123Scan2>.

# SYMBOL DS9808

## REGULATORY INFORMATION

© **MOTOROLA, INC. 2010** All rights reserved.  
Motorola reserves the right to make changes to any product to improve reliability, function, or design. Motorola does not assume any product liability arising out of, or in connection with, the application or use of any product, circuit, or application described herein. No license is granted, either expressly or by implication, estoppel, or otherwise under any patent right or patent, covering or relating to any combination, system, apparatus, machine, material, method, or process in which Motorola products might be used. An implied license exists only for equipment, circuits, and subsystems contained in Motorola products. MOTOROLA, the Stylized M Logo and Symbol and the Symbol logo are registered trademarks of Motorola, Inc. Other product names mentioned in this manual may be trademarks or registered trademarks of their respective companies and are hereby acknowledged. This Motorola Product may include Motorola Software, Commercial Third Party Software, and Publicly Available software. Refer to *Product Reference Guide* for complete copyright, conditions and disclaimer information.

**Warranty**  
For the complete Motorola hardware product warranty statement, go to: <http://www.motorola.com/enterprisemobility/warranty>.

**Service Information**  
If you have a problem using the equipment, contact your facility's Technical or Systems Support. If there is a problem with the equipment, they will contact the Motorola Enterprise Mobility Support at: <http://www.motorola.com/enterprisemobility/contactsupport>.  
For the latest version of this guide go to: <http://www.motorola.com/enterprisemobility/manuals>.

### Waste Electrical and Electronic Equipment (WEEE)

**English:** For EU Customers: All products at the end of their life must be returned to Motorola for recycling. For information on how to return product, please go to: <http://www.motorola.com/recycling/weee>.

**Bulgarian:** За клиенти от ЕС: След края на ползването им живот всички продукти трябва да се връщат на Motorola за рециклиране. За информация относно връщането на продуктите, моля отидете на адрес: <http://www.motorola.com/recycling/weee>.

**Catalan:** Pro zakazníky z EÚ: Všetchny produkty je nutné po skončení jejich životnosti vrátit společnosti Motorola k recyklaci. Informace o způsobu vrácení produktu najdete na webové stránce: <http://www.motorola.com/recycling/weee>.

**Danish:** Til kunder i EU: Alle produkter skal returneres til Motorola til reciklering, når de er udfjældt. Læs oplysningerne om returnering af produkter på: <http://www.motorola.com/recycling/weee>.

**Deutsch:** Für Kunden innerhalb der EU: Alle Produkte müssen am Ende ihrer Lebensdauer zum Recycling an Motorola zurückgesandt werden. Informationen zur Rücksendung von Produkten finden Sie unter <http://www.motorola.com/recycling/weee>.

**Eλληνικά:** Για πελάτες στην Ε.Ε.: Όλα τα προϊόντα, στο τέλος της διάρκειας ζωής τους, πρέπει να επιστρέφονται στην Motorola για επανακύλιση. Για περισσότερες πληροφορίες σχετικά με την επιστροφή ενός προϊόντος, επισκεφτείτε τη διεύθυνση: <http://www.motorola.com/recycling/weee>.

**Esperanto:** Por klientojn de Eŭropa Unio: Ĉiuj produktoj devas esti resenditaj al Motorola por reciklado. Informoj pri la maniero resendigi la produkton estas sur la retejo: <http://www.motorola.com/recycling/weee>.

**Eesti:** EL klientidele: kõik tooted tuleb nende eluea lõppedes tagastada taaskasutamise eesmärgil Motorola'ile. Lisainformatsiooni saamiseks toote tagastamise kohta külastage veebilehti: <http://www.motorola.com/recycling/weee>.

**English:** For EU Customers: All products at the end of their life must be returned to Motorola for recycling. For information on how to return product, please go to: <http://www.motorola.com/recycling/weee>.

**French:** Pour clients de l'UE: Tous les produits ne fin de vie doivent être retournés à Motorola pour recyclage. Pour de plus amples informations sur le retour de produits, consultez: <http://www.motorola.com/recycling/weee>.

**German:** Für Kunden in der EU: Alle Produkte müssen am Ende ihrer Lebensdauer zum Recycling an Motorola zurückgesandt werden. Informationen zur Rücksendung von Produkten finden Sie unter <http://www.motorola.com/recycling/weee>.

**Greek:** Για πελάτες στην Ε.Ε.: Όλα τα προϊόντα, στο τέλος της διάρκειας ζωής τους, πρέπει να επιστρέφονται στην Motorola για επανακύλιση. Για περισσότερες πληροφορίες σχετικά με την επιστροφή ενός προϊόντος, επισκεφτείτε τη διεύθυνση: <http://www.motorola.com/recycling/weee>.

**Hebrew:** ללקוחות מ-123Scan<sup>2</sup> ב-123Scan<sup>2</sup> יש להחזיר את כל המוצרים למוטורלה למחזוריות. למידע נוסף על איך להחזיר מוצר, אנא היכנסו לכתובת: <http://www.motorola.com/recycling/weee>.

**Hungarian:** Az EU-s ügyfelek számára: Minden terméküket a Motorola-élektromos hulladékkezelési programjukban kell visszatéríteni a Motorola-hoz. A termék visszatérítésének módjával kapcsolatos tudnivalókat látogasson el a <http://www.motorola.com/recycling/weee> weboldala.

**Italian:** Per i clienti dell'UE: tutti i prodotti che sono giunti al termine del rispettivo ciclo di vita devono essere restituiti a Motorola al fine di consentire il riciclaggio. Per informazioni sulle modalità di restituzione, visitate il seguente sito Web: <http://www.motorola.com/recycling/weee>.

**Japanese:** EU圏のお客様へ: 製品のライフサイクルの終わりに至ると、製品はMotorolaに返却され、リサイクルされます。製品を返却する方法の詳細については、次のWebサイトにアクセスしてください: <http://www.motorola.com/recycling/weee>.

**Korean:** EU 고객님들께: 모든 제품은 수명이 다 되었을 때 Motorola에 반납하여 재활용해야 합니다. 제품 반납 방법의 자세한 내용은 다음 웹사이트를 방문하십시오: <http://www.motorola.com/recycling/weee>.

**Latvian:** Ei-Ei klientiem: Visi produkti jāatgriež Motorola uz reciklējumu, kad tie ir izstrādāti. Lai iegūtu informāciju par produktu nogādāšanu Motorola uzdevam, skatiet: <http://www.motorola.com/recycling/weee>.

**Lithuanian:** Visiems klientams: Visi produktai turi būti grąžinti Motorola, kad būtų galima atlikti atnaujinimą. Daugiau informacijos apie grąžinimą, rasite: <http://www.motorola.com/recycling/weee>.

**Malay:** Untuk pelanggan di E.U.: Semua produk yang telah mencapai akhir hayatnya harus dikembalikan kepada Motorola untuk diolah semula. Untuk maklumat mengenai cara mengembalikan produk, sila lawati: <http://www.motorola.com/recycling/weee>.

**Norwegian:** For kunder i EU: Alle produkter skal returneres til Motorola til reciklering, når de er udfjældt. Læs oplysningerne om returnering af produkter på: <http://www.motorola.com/recycling/weee>.

**Polish:** Klienci z obszaru Unii Europejskiej: Produkty wycofane z eksploatacji należy zwrócić do firmy Motorola w celu ich użyczenia. Informacje na temat zwrótu produktów znajdują się na stronie internetowej: <http://www.motorola.com/recycling/weee>.

**Portuguese:** Para clientes da UE: Todos os produtos no fim de vida devem ser devolvidos à Motorola para reciclagem. Para obter informações sobre como devolver o produto, visite: <http://www.motorola.com/recycling/weee>.

**Romanian:** Pentru clienții din UE: Toate produsele, la sfârșitul duratei lor de funcționare, trebuie returnate la Motorola pentru reciclare. Pentru informații despre returnarea produsului, vizitați: <http://www.motorola.com/recycling/weee>.

**Slovak:** Pre zákazníkov z krajín EÚ: Všetky výrobky musia byť po uplynutí doby ich životnosti vrátené spoločnosti Motorola na recykláciu. Bližšie informácie o vrátení výrobkov nájdete na: <http://www.motorola.com/recycling/weee>.

**Slovenian:** Za kupce v EU: vsi izdelki se morajo po poteku življenjske dobe vrniti podjetju Motorola za recikliranje. Za informacije o vračilu izdelka obiščite: <http://www.motorola.com/recycling/weee>.

**Swedish:** För kunder inom EU: Alla produkter som uppnått sin livslängd måste returneras till Motorola för återvinning. Information om hur du returnerar produkten finns på <http://www.motorola.com/recycling/weee>.

**Turkish:** AB Müşterileri için: Kullanım süresi dolan tüm ürünler geri dönüştürme için Motorola'ya iade edilmelidir. Ürünlerin nasıl iade edileceği hakkında bilgi için lütfen şu adresi ziyaret edin: <http://www.motorola.com/recycling/weee>.

### Ergonomic Recommendations

**Caution:** In order to avoid or minimize the potential risk of ergonomic injury follow the recommendations below. Consult with your local Health & Safety Manager to ensure that you are adhering to your company's safety programs to prevent employee injury.

- Reduce or eliminate repetitive motion
- Maintain a natural position
- Reduce or eliminate excessive force
- Keep objects that are used frequently within easy reach
- Perform tasks at correct heights
- Reduce or eliminate vibration
- Reduce or eliminate direct pressure
- Provide adjustable workstations
- Provide adequate clearance
- Provide a suitable working environment
- Improve work procedures.

### Regulatory Information

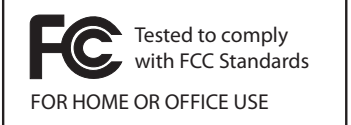
This device is approved under the Symbol Technologies brand: Symbol Technologies, Inc., is the Enterprise Mobility business of Motorola, Inc. ("Motorola").

This guide applies to Model Number DS9808

All Motorola/Symbol devices are designed to be compliant with rules and regulations in locations they are sold and will be labeled as required. Local language translations are available at the following website: <http://www.motorola.com/enterprisemobility/support>.

Any changes or modifications to Motorola/Symbol Technologies equipment, not expressly approved by Motorola/Symbol Technologies, could void the user's authority to operate the equipment.

### Radio Frequency Interference Requirements



**Note:** This equipment has been tested and found to comply with the limits for a Class B digital device, pursuant to Part 15 of the FCC rules. These limits are designed to provide reasonable protection against harmful interference in a residential installation. This equipment generates, uses and can radiate radio frequency energy and, if not installed and used in accordance with the instruction manual, may cause harmful interference to radio communications. However there is no guarantee that interference will not occur in a particular installation. If this equipment does cause harmful interference to radio or television reception, which can be determined by turning the equipment off and on, the user is encouraged to try to correct the interference by one or more of the following measures:

- Reorient or relocate the receiving antenna
- Increase the separation between the equipment and receiver
- Connect the equipment into an outlet on a circuit different from that to which the receiver is connected
- Consult the dealer or an experienced radio/TV technician for help.

### Radio Frequency Interference Requirements – Canada

This Class B digital apparatus complies with Canadian ICES-003. Cet appareil numérique de la classe B est conforme à la norme NMB-003 du Canada.

### Marking and European Economic Area (EEA)



### Statement of Compliance



Motorola/Symbol hereby declares that this device is in compliance with all the applicable Directives, 2004/108/EC and 2006/95/EC.

A Declaration of Conformity may be obtained from <http://www.motorola.com/enterprisemobility/doc>

Japan (VCCI) - Voluntary Control Council for Interference Class B ITE

この装置は、情報処理装置等電波障害自主規制協議会（VCCI）の基準に基づくクラスB情報技術装置です。この装置は、家庭環境で使用することを目的としています。この装置がラジオやテレビジョン受信機に近接して使用されると、受信障害を引き起こすことがあります。取扱説明書に従って正しい取り扱いをして下さい。

This is a Class B product based on the standard of the Voluntary Control Council for Interference from Information Technology Equipment (VCCI). If this is used near a radio or television receiver in a domestic environment, it may cause radio interference. Install and use the equipment according to the instruction manual.

### Korea Warning Statement for Class B ITE

이 기기는 가정용으로 전자파 적합등록을 한 기기이오니 주거지역에 서는 물론 모든 지역에서 사용할 수 있습니다.

Class B class User's Guide  
As this equipment has obtained EMC registration for household use, it can be used in any area including residential areas.

### Laser Devices



Symbol products using lasers comply with US 21CFR1040.10 and 1040.11 except for deviations pursuant to laser notice no. 50, dated June 24, 2007 and IEC 60825-1 (Ed. 2.0), EN60825-1:2007.

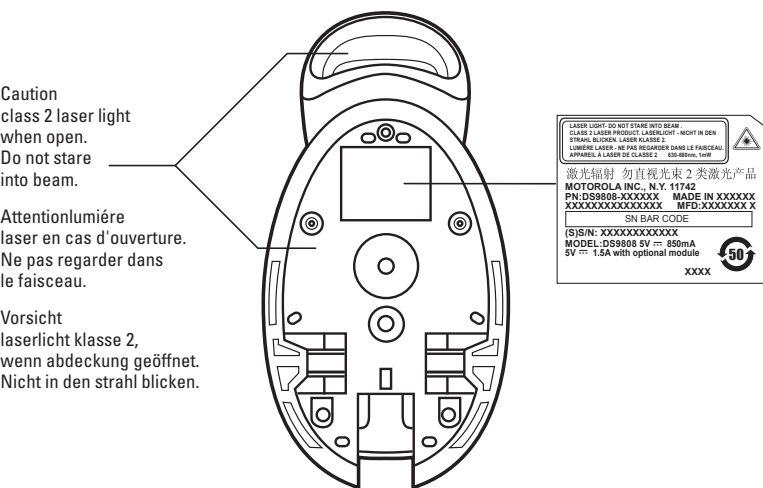
The laser classification is marked on one of the labels on the device. Class 1 Laser devices are not considered to be hazardous when used for their intended purpose. The following statement is required to comply with US and international regulations:

Caution: Use of controls, adjustments or performance of procedures other than those specified herein may result in hazardous laser light exposure.

Class 2 laser scanners use a low power, visible light diode. As with any very bright light source, such as the sun, the user should avoid staring directly into the light beam. Momentary exposure to a Class 2 laser is not known to be harmful.

### Power Supply

Use ONLY a LISTED Motorola, Type no. 50-14000, or PWRS-14000, Direct Plug-In power supply, marked Class 2 or LPS, or SELV, Rated 5 Vdc, 850 m A Min. (IEC 60950-1). Use of alternative power supply will invalidate any approvals given to this device and may be dangerous.



Motorola, Inc.  
One Motorola Plaza Holtville, New York 11742-1300, USA

MOTOROLA and the Stylized M Logo and Symbol and the Symbol logo are registered in the U.S. Patent and Trademark Office. All other product or service names are the property of their respective owners.  
© Motorola, Inc. 2010



72-109917-01 Revision B April 2010



<http://www.motorola.com/ds9808>

# SYMBOL DS9808

## Recommended Usage Guide